

# SMART SOLUTIONS FOR THE LABELING INDUSTRY

## UNWINDER & REWINDER FOR EPSON C7500 LABEL PRINTER



LABEL REWINDER (ASD1111-S0) - Epson C7500 printer - LABEL UNWINDER (ASS1111-S0)  
(Not included)

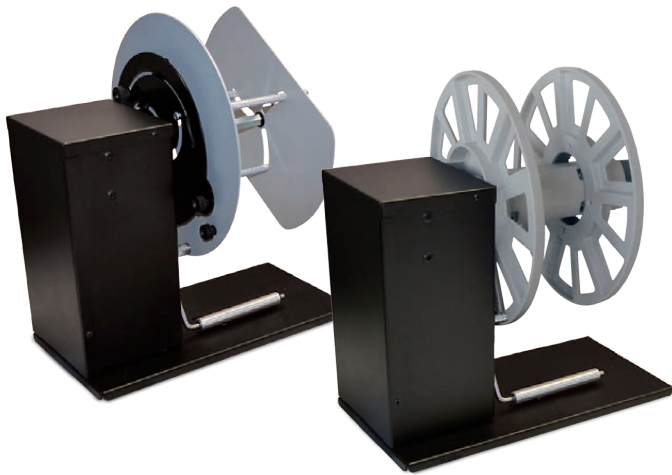
The Unwinding/Rewinding system for Epson C7500 Label Printer can handle media up to 127mm (5") wide and unwind/rewind label rolls having outside diameter up to 250mm (9.84").

Units are equipped with a 3" or adjustable core holder from 40 to 118mm (1.57" - 4.64").

### Electronic and mechanical features:

An external power supply 100/240VAC - 2.5A  $\overline{\text{~}}$  at 24V allows an electronic circuit to provide, through the tension arm, the automatic adjustment of the rotation direction and speed.

The unwinder / rewinder have two types of speed adjustments, through the two buttons it is possible to set the maximum speed required while the tension arm will auto adjust the speed from zero to the set value. The control panel allows to set the label rewinding face-in or face-out option.



### LABEL UNWINDER

The position of the tension arm is calibrated as follows:

- When the printer forwards the media for printing, the tension arm goes up and the device unwinds the media.
- When the tension arm is in the middle position, the device is idle.
- When the printer pulls back the media, the tension arm goes down and the device rewinds it.



### LABEL REWINDER

The position of the tension arm is calibrated as follows:

- When the printer forwards the media for printing, the tension arm goes down and the device rewinds the media.
- When the tension arm is in the middle position, the device is idle.
- When the printer pulls back the media, the tension arm goes up and the device unwinds it.

#### LABEL UNWINDER

ASS1111-S0	40-118mm adjustable core holder
ASS1114-S0	3" fixed core holder

#### LABEL REWINDER

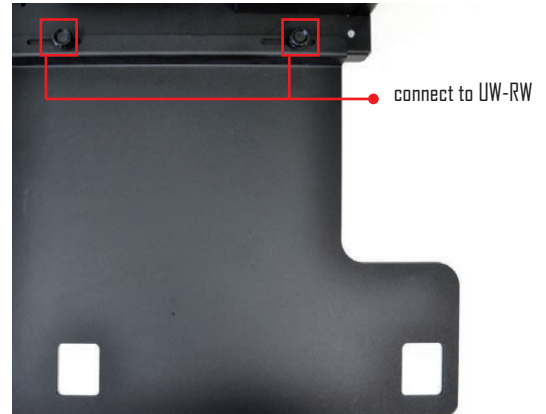
ASD1111-S0	40-118mm adjustable core holder
ASD1114-S0	3" fixed core holder

## UNWINDER & REWINDER FOR EPSON C7500 LABEL PRINTER

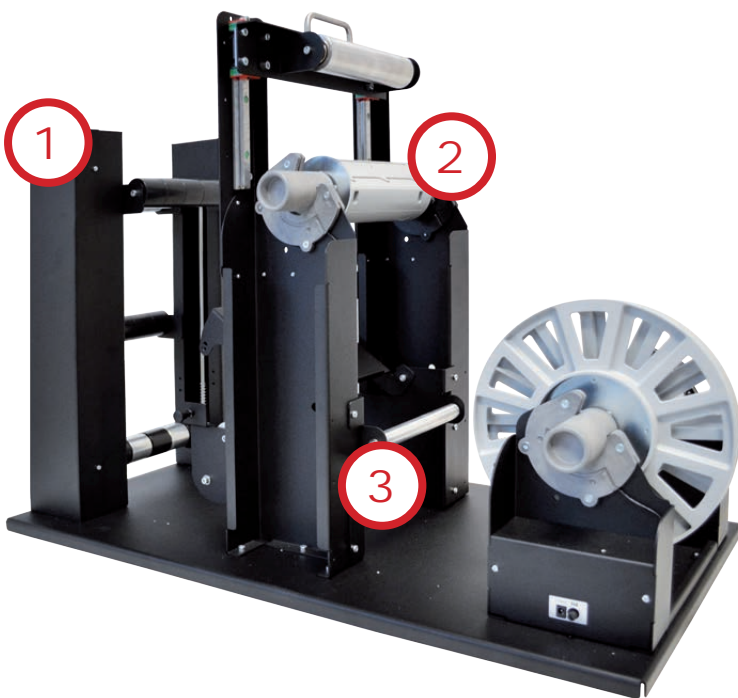


To guarantee a perfect aligned media path in the system, are available a specific printer plate to connect the rewinder and/or unwinder with the printer.

PRINTER PLATE	
EPS75PL-UW	UW printer plate for EPSON C7500
EPS75PL-RW	RW printer plate for EPSON C7500



UW-RW printer plate for Epson C7500



## INLINE MATRIX REMOVER FOR EPSON C7500 LABEL PRINTER

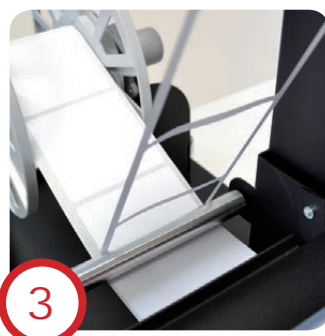
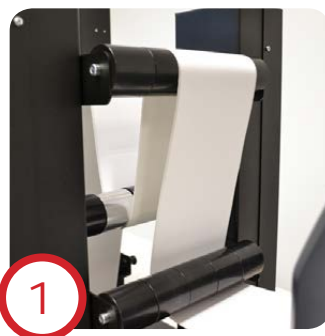
Designed as an in-line option, the matrix remover for the Epson C7500 is an all-in-one system capable of removing the excess label material around each pre die cut label, and rewinding.

By printing on die cut label rolls with the matrix intact, you can be assured that your labels are completely printed, edge-to-edge. A quick and easy to maximize your printing uptime.

Electronic and mechanical features: an external power supply 100/240VAC - 5A  $\overline{\text{~}}$  at 24V allows an electronic circuit to provide, through the sensor, the adjustment of the rotationspeed. A 2A fuse is used as protection.

### Specifics

- 3" fixed core holders
- Maximum OD rolls: 250mm (9.84")
- Maximum label width: 127mm (5")



INLINE MATRIX REMOVER	
EPS75-MTX27	Matrix remover for EPSON C7500



inline matrix remover + Epson C7500 printer